

# Town & Country

Estate & Letting Agents

Bryn Hedd, Southsea

£725



An excellent opportunity to rent a 3 bedroom semi-detached property with a large plot, a good sized garden to rear and parking for two/three vehicles off road.

Imperial Buildings, King Street, Wrexham, LL11 1HE  
[info@townandcountrywrexham.com](mailto:info@townandcountrywrexham.com)  
TEL: 01978 291345



**Kitchen/Diner**



**Utility**

Utility area and downstairs WC



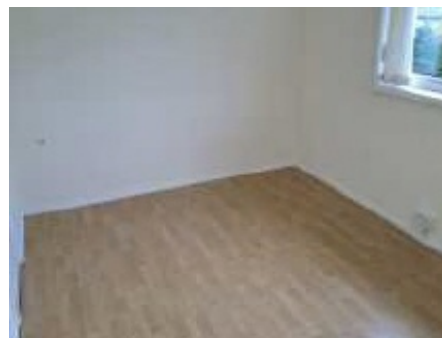
**Lounge**



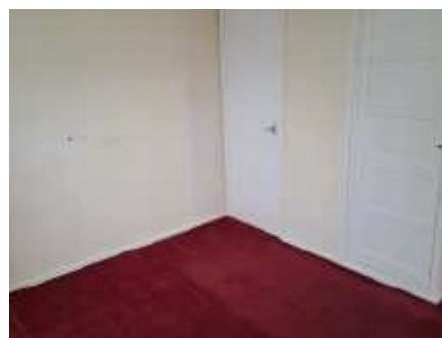
**Stairs**



**Bedroom One**



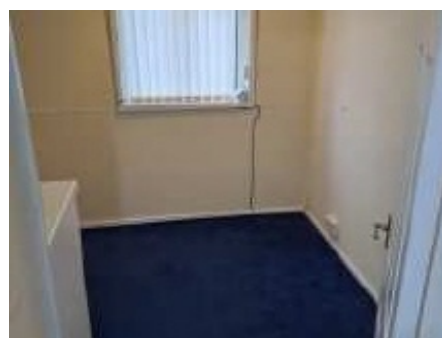
**Bedroom Two**



**Bedroom Three**



**Bathroom**







**Outside**



These particulars, whilst believed to be accurate are set out as a general outline only for guidance and do not constitute any part of an offer or contract. Intending purchasers should not rely on them as statements of representation of fact, but most satisfy themselves by inspection or otherwise as to their accuracy. No person in this firm's employment has the authority to make or give any representation or warranty in respect of the property.

Score	Energy rating	Current	Potential
92+	A		
81-91	B		83   B
69-80	C		
55-68	D	65   D	
39-54	E		
21-38	F		
1-20	G		