

Town & Country

Estate & Letting Agents

Wenfryn Close, Trevor, Llangollen

£475,000



A substantial Four bedroom detached family house with the benefit of a 2 storey annex in the sought after village of Trevor. The property has undergone an extensive schedule of renovations, including a full rewire and subsequent plastering, and UPVC double glazing. In brief the accommodation comprises an entrance hall, cloakroom WC, large kitchen breakfast room, lounge, sunroom and dining room. To the first floor are three double bedrooms and the family bathroom. Externally the is approached through double wrought iron gates with a drive way offering ample off road parking and dissecting mature wrap around gardens.

Imperial Buildings, King Street, Wrexham, LL11 1HE
info@townandcountrywrexham.com

TEL: 01978 291345



ENTRANCE HALL

A spacious entrance hall, stairs rise to the first floor landing with useful under stairs cupboard, original flooring, spotlights to ceiling,

GROUND FLOOR W/C

UPVC double glazed frosted window to front



KITCHEN

4.65 x 4.08

- Fitted range of base and wall units with work surface areas incorporating twin sink with drainer and UPVC double glazed window above overlooking the rear garden, gas hob, electric oven and grill, plumbing for dishwasher, radiator, spotlight to ceiling



BEDROOM TWO

4.54 x 4.26

UPVC double glazed window to rear, radiator, built in wardrobe,



LOUNGE

5.19 x 4.26

Large space with UPVC double glazed window to side, exposed chimney breast, radiator

DINING ROOM

2.73 x 3.78

Walk in UPVC double glazed window to rear overlooking the garden, radiator



MASTER BEDROOM

3.70 x 4.26

double glazed window to front with lovely views, radiator, spot lights to ceiling



BEDROOM THREE

3.27 x 3.62

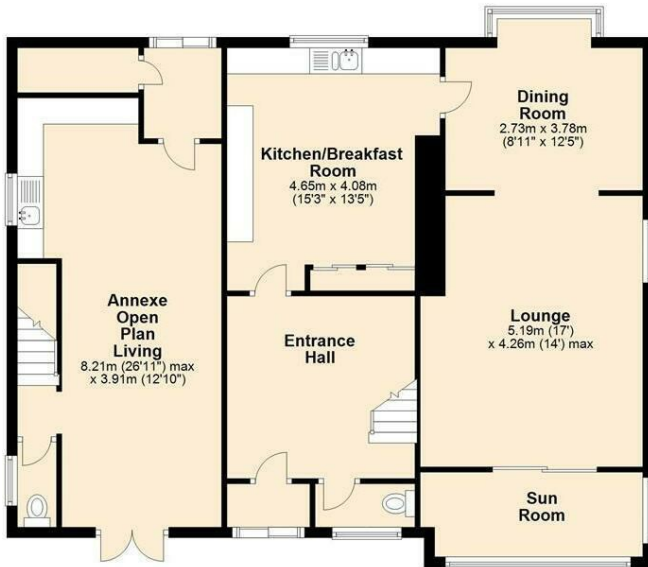
UPVC double glazed window to rear, radiator.



FAMILY BATHROOM

Fitted with a modern Four piece White suite of with mixer taps, walk in shower enclosure, w.c, wash hand basin, fully tiled walls

Ground Floor
 Approx. 112.6 sq. metres (1211.7 sq. feet)



First Floor
 Approx. 108.1 sq. metres (1163.9 sq. feet)



Total area: approx. 220.7 sq. metres (2375.5 sq. feet)

Artists impression, for illustration purposes only. All measurements are approximate. Not to Scale. www.propertyphotographic.com. Direct Dial 07973 205 007
 Plan produced using PlanUp.

These particulars, whilst believed to be accurate are set out as a general outline only for guidance and do not constitute any part of an offer or contract. Intending purchasers should not rely on them as statements of representation of fact, but most satisfy themselves by inspection or otherwise as to their accuracy. No person in this firm's employment has the authority to make or give any representation or warranty in respect of the property.

Energy Efficiency Rating		Current	Potential
<i>Very energy efficient - lower running costs</i>			
(92 plus) A			
(81-91) B			
(69-80) C			
(55-68) D			
(39-54) E			
(21-38) F			
(1-20) G			
<i>Not energy efficient - higher running costs</i>			
England & Wales		EU Directive 2002/91/EC	