

Town & Country

Estate & Letting Agents

Old Mill Court, Chester

Offers In Excess Of £365,000



This charming three-bedroom cottage on Mill Lane, next to the historic Upton Mill, combines historic character with modern living. Situated in a desirable Chester location, it offers a peaceful retreat with convenient access to local amenities and transport, including buses and Bache Railway Station. This property offers three spacious bedrooms, en suite, luxury three piece bathroom suite and a kitchen/breakfast room featuring an exposed brick flu housing a cast iron log burner. Outside there is a parking space, garage and EV charger as well as maintained communal gardens. Viewing is advised to appreciate this delightful property.

33 Lower Bridge Street, Chester, Cheshire, CH1 1RS
info@townandcountrychester.com

TEL: 01244 403900

DESCRIPTION

Nestled away on Mill Lane next to the old Upton Mill (Built circa 1775), this beautifully presented three-double-bedroom cottage offers a blend of both historic charm and contemporary living. Located in the heart of one of Chester's most sought-after locations, the property offers a peaceful retreat while providing excellent access to local amenities and transport links, with a regular bus service and Bache Railway Station just a short walk away.



LOCATION

Situated in within the popular residential location of Upton close to local amenities including shops, schools and recreational facilities together with an electrified rail link to Liverpool. There are regular bus services into Chester city centre where more comprehensive facilities are available. Leisure facilities nearby include a Golf Course together with the Northgate Arena. Easy access is available to neighbouring centres via the ring road which leads to the M53 and the motorway network together with the Chester Southerly By-Pass to North Wales



DIRECTIONS

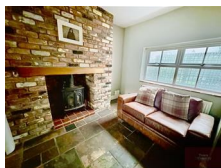
From our Chester Branch: Head South on Lower Bridge Street towards St. Olave Street, turn right onto Castle Street. At the roundabout, take the 2nd exit onto A5268 and follow the road for 0.7 mi to the next roundabout, taking the 1st exit onto Upper Northgate Street/A5116. Follow the right for 0.1 mi and turn right onto Liverpool Road/A5116, turn left onto A5116 for 0.2 mi. At the roundabout, take the 1st exit and stay on Liverpool Road for 0. Mi. Turn right onto Mill Lane, follow for 0.5 mi then turn right onto Old Mill Court. Turn right to stay on Old Mill Count (destination will be on the right).



KITCHEN/BREAKFAST ROOM

20'9" x 13'2"

Fitted with a range of attractive wall, base, and drawer units, complemented by ornamental handles and solid wood work surfaces, this kitchen also features a matching island unit incorporating a breakfast bar. The work surfaces house a Belfast sink with an adjustable mixer tap, along with display cabinets mounted on the wall. The room is finished with slate-effect tiled flooring, a radiator, and windows to both the front and rear elevations. An exposed beam runs across the ceiling, while an exposed brick flu houses a cast-iron burner, which sits on a quarry-tiled hearth beneath an oak mantel. A lever latch door leads to the living room.



-
-



LIVING ROOM

17'4" x 14'7"

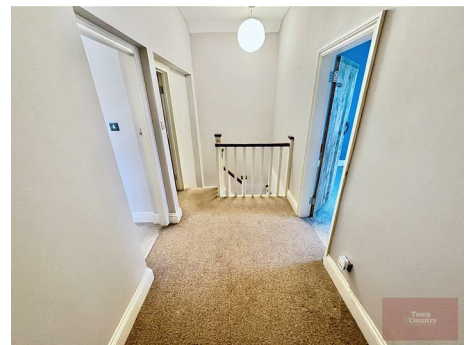
Featuring a woodgrain effect timber laminate floor with an exposed brick wall. This room is comprised of a radiator, two windows facing the side elevation, stairs off with a storage area below rising to the first-floor accommodation and an opening through to the dining room.



DINING ROOM

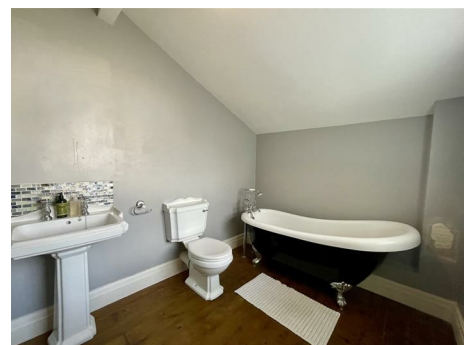
14'5" x 9'3"

Continuing with the timber laminate flooring to the dining room there is a window facing the front elevation with a radiator below and UPVC double-glazed French doors opening to the paved courtyard.



FIRST FLOOR LANDING

A spacious first-floor landing features high ceilings throughout, providing access to the loft space. Leaver latch doors open to the bathroom suite and all three bedrooms, with the principal bedroom benefiting from ensuite facilities.



BATHROOM

9'2" x 6'9"

Installed with a lovely three-piece white suite comprising of a low-level WC, pedestal basin and a Victorian slipper-style roll-top bath with claw feet, featuring a mixer tap and shower extension. Additionally, there is a column style radiator incorporating a chrome heater town rail, exposed wooden floorboards and an opaque window facing the side elevation.



PRINCIPAL BEDROOM

12'1" x 14'7"

With a window facing the side elevation and radiator below along with the lever latch door off opening to the ensuite shower room.



ENSUITE SHOWER ROOM

7'8" x 6'9"

Having a three-piece suite comprising an oversized shower enclosure with dual-head thermostatic shower, a low-level WC with a fitted shelving unit behind, complete with a countertop mounted wash basin. The walls are partially tiled with a chrome heated towel rail and opaque window facing the side elevation. Additionally, there is a built-in double-door storage/linen cupboard with shelves, a hanging rail and a radiator.



BEDROOM TWO

12'9" x 13'7"

With a window facing the rear elevation, an exposed brick flue housing an ornamental cast-iron fireplace. A lever latch door opens to a walk-in wardrobe measuring 7'5" x 3'8".



BEDROOM THREE

9'4" x 7'4"

With a window facing the front elevation and radiators.



EXTERNALLY



GARAGE

ARRANGE A VIEWING

Please contact a member of the team and we will arrange accordingly.

All viewings are strictly by appointment with Town & Country Estate Agents Chester on 01244 403900.

SERVICES TO PROPERTY

The agents have not tested the appliances listed in the particulars.

Council Tax: Band E - £2783

Tenure: Leasehold (899 years remaining)

Service charge: £300

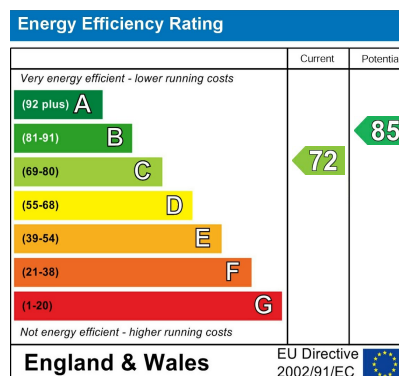
MORTGAGE SERVICES

Town & Country Estate Agents can refer you to a

mortgage consultant who can offer you a full range of mortgage products and save you the time and inconvenience by trying to get the most competitive deal to meet your requirements. Our mortgage consultant deals with most major Banks and Building Societies and can look for the most competitive rates around to suit your needs. For more information contact the Chester office on 01244 403900. Mortgage consultant normally charges no fees, although depending on your circumstances a fee of up to 1.5% of the mortgage amount may be charged. YOUR HOME MAY BE REPOSSESSED IF YOU DO NOT KEEP UP REPAYMENTS ON YOUR MORTGAGE.

SUBMIT AN OFFER

If you would like to submit an offer please contact the Chester branch and a member of the team will assist you further.



These particulars, whilst believed to be accurate are set out as a general outline only for guidance and do not constitute any part of an offer or contract. Intending purchasers should not rely on them as statements of representation of fact, but must satisfy themselves by inspection or otherwise as to their accuracy. No person in this firm's employment has the authority to make or give any representation or warranty in respect of the property.