

Town & Country

Estate & Letting Agents



189 Saddlery Way, Chester, CH1 4LZ

£995 PCM



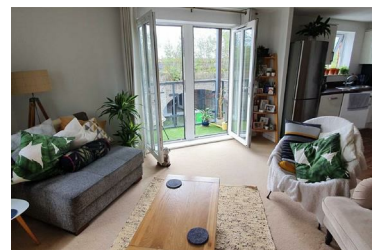
**** VIEWING LIST IS FULL ****

TOWN & COUNTRY WREXHAM ARE PLEASED TO OFFER FOR RENT THIS: Two-bedroom second-floor apartment close to the City Centre. The accommodation has UPVC double glazing and electric storage heaters and comprises a modern open-plan kitchen area with integrated appliances, a living room with a balcony, two double bedrooms, and a bathroom. The property has an allocated parking space and a communal sky dish. It is part furnished. Viewings will commence from the week beginning Tuesday, 27th of May.

**** PLEASE NOTE, THIS PROPERTY IS PART FURNISHED ****

Council Tax Band - C
EPC - C

- 2ND FLOOR APARTMENT
- TWO DOUBLE BEDROOMS
- ALLOCATED PARKING
- AVAILABLE FOR VIEWING WEEK COMMENCING 27TH OF MAY
- CLOSE TO CITY CENTRE
- OPEN PLAN LIVING AREA
- PART FURNISHED



Town & Country 1-3 Imperial Buildings, King Street, Wrexham, LL11 1HE

Tel: 01978 291345 Email: lettings@townandcountrywrexham.com <https://www.townandcountryestateagents.com>