

Town & Country

Estate & Letting Agents

Village Road, Chester

£460,000



Nestled on Village Road in the charming village of Great Barrow, Chester, this delightful semi-detached cottage offers a perfect blend of character and modern living. Originally constructed in 1880, the home has been thoughtfully modernised with an extension in 2002, enhancing its appeal while preserving its historical charm.

33 Lower Bridge Street, Chester, Cheshire, CH1 1RS
info@townandcountrychester.com

TEL: 01244 403900

DESCRIPTION

The property boasts two inviting reception rooms, three well-proportioned bedrooms set on a generously sized plot, the cottage is surrounded by beautifully tended gardens. The property is equipped with UPVC double glazing and gas central heating.



LOCATION

The property occupies a tranquil position in the rural village of Great Barrow. The village offers an attractive church and pub with a more comprehensive range of services in Chester including supermarkets and the outlet village at Cheshire Oaks. There is a well regarded primary school in the village which is a designated partner school to Christleton High School which is the nearby state school and is OFSTED rated outstanding and has a daily bus service from Barrow. There is also an excellent selection of private schools in and around Chester including Abbey gate College and the Kings & Queens Schools. There is a village playing field, cricket club plus several golf courses in the locality at Waverton and Vicars Cross. There is horse racing at Chester, Bangor on Dee and Aintree. Little Budworth offers polo and motor racing at Oulton Park.

ENTRANCE PORCH

4'10 x 4'6

An oak front door opens into the entrance porch, featuring red and white quarry tile flooring, windows to both side elevations, and a pine internal door leading into the living room.



LIVING ROOM

17'6 x 11'4

This dual-aspect room features light oak flooring and windows to the front and side elevations, both with radiators beneath. A beautiful stone fireplace with oak mantle houses a cast-iron burner. To one side is a fitted floor-to-ceiling shelving cabinet. A pine lever latch internal door leads into the dining/sitting room.



DINING/SITTING ROOM

16'0 x 13'2

With light oak flooring throughout, this spacious room includes two sets of fitted floor-to-ceiling cabinets, two radiators, and stairs rising to the first floor. A skylight brightens the sitting area, and a UPVC double-glazed door opens to the rear garden's paved patio. A pine lever latch door leads to the inner hallway.



INNER HALLWAY

7'2 x 6'6

Featuring a ceramic tile floor, radiator, and recessed ceiling downlights, this area functions as a study space. It offers open access to the kitchen/breakfast room and a lever latch door to the shower room.



KITCHEN/BREAKFAST ROOM

14'6 x 9'8

Fitted with a range of cream shaker-style wall, base, and drawer units, complemented by solid wood work surfaces and tiled splashbacks. It includes a stainless steel one-and-a-half bowl sink with mixer tap, a matching breakfast table, and space for a cooker with a stainless steel extractor hood above. There's also space and plumbing for a dishwasher and washing machine. With ceramic tile flooring, a radiator, recessed ceiling downlights, and a triple aspect with windows to the front, side, and rear elevations. A composite double-glazed back door provides additional access to the garden.



SHOWER ROOM

6'6 x 5'5

This beautifully appointed space features a vaulted ceiling with recessed downlights and a skylight. The partially tiled walls, ceramic tiled floor, and UPVC opaque window to the side. The room is fitted with an oversized shower enclosure with a thermostatic shower, a dual/low-level WC, a pedestal wash hand basin, and a heated towel rail.

FIRST FLOOR LANDING

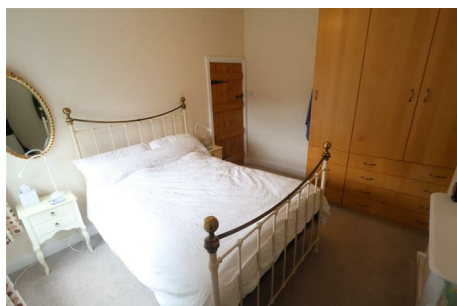
Provides access to the loft space and a deep, built-in over-stairs storage cupboard. Pine lever latch doors lead to all three bedrooms and the bathroom.



BEDROOM ONE

11'6 x 9'8

With a window facing the front elevation, a radiator, and an ornamental cast-iron fireplace.



BEDROOM TWO

11'5 x 7'7

Includes a fitted floor-to-ceiling storage cabinet and a rear-facing window with a radiator below, offering beautiful views over the fields.



BEDROOM THREE

8'2 x 7'9

Featuring woodgrain-effect laminate flooring, a window to the side elevation, and a radiator below.



BATHROOM

7'0 x 6'8

Fitted with a Victorian-style suite, including a roll-top clawfoot bath with mixer tap and handheld shower attachment, a low-level WC, and a pedestal wash hand basin. The room features woodgrain-effect laminate flooring, partially tiled walls, a radiator, a wall-mounted Worcester gas combination boiler, and an opaque window to the side elevation.

EXTERNALLY

Accessed by vehicle over cobblestone and brick-block off-road parking for up to four vehicles, the property also features a paved and shrubbed front garden. To the rear, there's a lovely paved seating area overlooking fields.

To the left of the parking area, a sandstone wall with paved steps leads to a generously sized and beautifully maintained garden. The garden is mainly laid to lawn, with vibrant, well-stocked flowerbeds, a variety of mature shrubs, plants and trees, an ornamental pond with a paved seating area and gazebo, a vegetable garden, greenhouse, and two timber-built storage sheds. The property also benefits from external lighting and a water supply.



These particulars, whilst believed to be accurate are set out as a general outline only for guidance and do not constitute any part of an offer or contract. Intending purchasers should not rely on them as statements of representation of fact, but must satisfy themselves by inspection or otherwise as to their accuracy. No person in this firm's employment has the authority to make or give any representation or warranty in respect of the property.

