

Town & Country

Estate & Letting Agents

Mountain Street, Rhosllanerchrugog,
Wrexham

£87,500



This two-bedroom apartment provides a practical layout with a bright living room, fitted kitchen with integrated appliances, two bedrooms, and a tiled wet room. The property includes double glazing, electric heating, a secure intercom entry system, and built-in storage. Located on Mountain Street in Rhosllanerchrugog, it is within easy reach of local shops, schools, and bus routes, with Wrexham town centre and Ruabon railway station only a few miles away.

Imperial Buildings, King Street, Wrexham, LL11 1HE
info@townandcountrywrexham.com

TEL: 01978 291345



DESCRIPTION

This two-bedroom ground floor apartment offers a bright living space and practical layout throughout. It features a spacious lounge, a modern kitchen with integrated appliances, two comfortable bedrooms, and a stylish wet room. Benefitting from a secure intercom entry system and ample built-in storage, the property also enjoys double-glazed windows and electric heating. Ideal for first-time buyers, downsizers, or investors, it is set within a well-maintained development with communal areas to the rear.

LOCATION

Mountain Street is a residential road in the village of Rhosllanerchrugog, Wrexham. It offers good local amenities including shops, schools and bus services, with Wrexham town centre and Ruabon railway station only a few miles away. The area is largely residential, giving it a quiet community feel while remaining convenient for travel into Wrexham and the wider region.



ENTRANCE HALL

8'2" x 3'9"

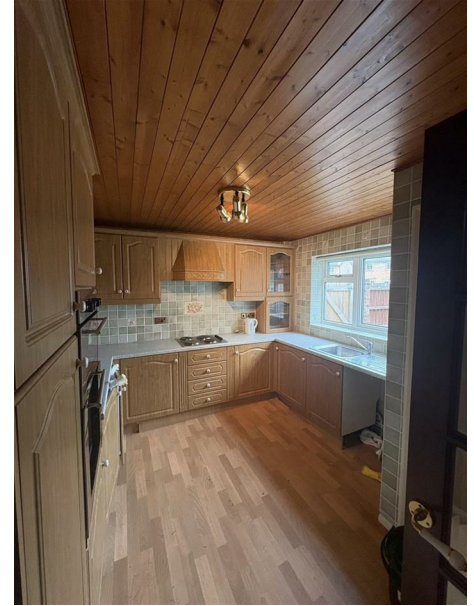
A practical reception area with a secure intercom entry system. The space includes two built-in storage cupboards—one housing the property's electric meters and the other providing useful additional storage.



LIVING ROOM

17'0" x 10'4"

A bright living room featuring an electric heater and a large double-glazed side window.



KITCHEN

Fitted with oak-style units, the kitchen offers space and plumbing for a washing machine, an electric heater, and a storage cupboard. Ceramic-tiled walls complement the integrated appliances, which include a fridge, freezer, and dishwasher. A double-glazed window overlooks the rear communal area.



BEDROOM ONE

14'0" x 8'5"

This well-proportioned bedroom includes an electric heater, a built-in storage cupboard, and a side-facing window.



WET ROOM

7'6" x 5'6"

The wet room features marble-effect tiled walls, an electric shower, and a low-level W/C.



BEDROOM TWO

10'11" x 8'6"

The second bedroom features an electric heater and a rear-facing window.



EXTERNALLY

Externally, the apartment features a car parking space and an outdoor storage shed in the communal courtyard, alongside a small, well-maintained front garden

Mortgage Advice (Wrexham)

Town and Country can refer you to Gary Jones Mortgage Consultant who can offer you a full range of mortgage products and save you the time and inconvenience for trying to get the most competitive deal to meet your

requirements. Gary Jones Mortgage Consultant deals with most major Banks and Building Societies and can look for the most competitive rates around to suit your needs. For more information contact the Wrexham office on 01978 291345.

Gary Jones Mortgage Consultant normally charges no fees, although depending on your circumstances a fee of up to 1.5% of the mortgage amount may be charged. Approval No. H110624
YOUR HOME MAY BE REPOSSESSED IF YOU DO NOT KEEP UP REPAYMENTS ON YOUR MORTGAGE.

Services (Wrexham)

The agents have not tested any of the appliances listed in the particulars.

To Make an Offer (Wrexham)

If you would like to make an offer, please contact a member of our team who will assist you further.

Viewings (Wrexham)

Strictly by prior appointment with Town & Country Wrexham on 01978 291345.

These particulars, whilst believed to be accurate are set out as a general outline only for guidance and do not constitute any part of an offer or contract. Intending purchasers should not rely on them as statements of representation of fact, but must satisfy themselves by inspection or otherwise as to their accuracy. No person in this firm's employment has the authority to make or give any representation or warranty in respect of the property.

