

# Town & Country

Estate & Letting Agents



33 Lower Bridge Street, Chester, CH1 1RS

**£850 PCM**

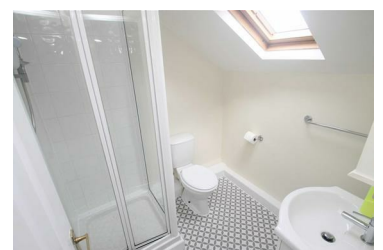
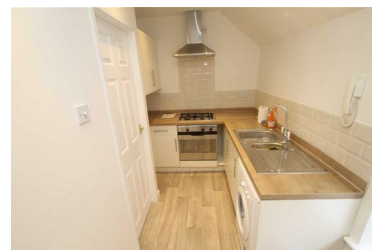


**\*\* NO LONGER ACCEPTING APPLICATIONS, VIEWINGS FULL \*\***

This one-bedroom apartment is located within Chester City Centre and comprises a communal entrance hall, spacious living room, kitchen, shower room, and bedroom. Unfurnished and available at the end of February.

Council Tax Band A  
EPC Rating C

- THIRD FLOOR CITY CENTRE ▪ ONE BEDROOM APARTMENT
- LARGE LIVING ROOM
- GAS CENTRAL HEATING
- EPC - C
- WELL PRESENTED
- UNFURNISHED
- COUNCIL TAX BAND - A



Town & Country 1-3 Imperial Buildings, King Street, Wrexham, LL11 1HE

Tel: 01978 291345 Email: [lettings@townandcountrywrexham.com](mailto:lettings@townandcountrywrexham.com) <https://www.townandcountryestateagents.com>